



**Summit County Public Health
Influenza Surveillance Report
2020 – 2021 Season**



Public Health
Prevent. Promote. Protect.

Report #15

Flu Surveillance Weeks 16 & 17 (1/17 to 1/30/2021)

Centers for Disease Control and Prevention MMWR Weeks 3 & 4

Summit County Surveillance Data:

During Week 17 of influenza surveillance, influenza-related activity was minimal in Summit County. Although COVID-19 activity has decreased, it still remains high with continued elevated risk of community exposure.

Table 1: Overall Influenza Activity Indicators in Summit County by week

	Week 16 MMWR 3 N (%)¹	Week 17 MMWR 4 N (%)¹	Percent change from previous week	Number of weeks increasing or decreasing
Lab Reports: Influenza				
Test Performed	560	557	- 0.5%	NC
Positive Tests (Number and %)	0 (0.0)	0 (0.0)	--	--
Influenza A (Number and %)	0 (0.0)	0 (0.0)	--	--
Influenza B (Number and %)	0 (0.0)	0 (0.0)	--	--
Lab Reports: COVID-19				
Test Performed	2252	2344	+ 4.1%	↑1
Positive Tests (Number and %)	237 (10.5)	187 (8.0)	- 24.2%	↓4
Acute care hospitalizations for Influenza:	0	0	--	--
Acute care hospitalizations for COVID-19:	188	149	- 20.7%	↓7
Pharmacy Prescriptions				
Zanamivir (Relenza)	0	0	--	--
Oseltamivir (Tamiflu)	0	0	--	--
Baloxavir marboxil (Xofluza)	0	0	--	--
Peramivir (Rapivab)	0	0	--	--
<i>Total</i>	0	0	--	--
Schools absenteeism²	4.7%	5.9%	+ 24.4%	↑1
Deaths (occurred in Summit County)				
Total deaths certified	180	162	- 10.0%	↓3
Pneumonia associated	28 (15.6)	24 (14.8)	- 4.8%	↓2
Influenza associated	0 (0.0)	0 (0.0)	--	--
COVID-19 associated	43 (23.9)	40 (24.7)	3.4%	↑1
Emergency room visits (ESSENCE)³				
Total ED Visits	4889	5026	+ 2.8%	↑1
Respiratory Encounters	456 (9.3)	449 (8.9)	- 4.2%	↓3
Fever and ILI Encounters	102 (2.1)	91 (1.8)	- 13.2%	↓1
1) N and % are reported when available				
2) Absence is for any reason. Percent is from total number of students enrolled. Data was collected from 12 schools or school districts throughout Summit County (n = approx. 32,000 students)				
3) Percent is from total number of emergency room interactions				
Note: Data is provisional and may be updated as more information is received. Percentages should be interpreted with caution. Small changes in number can result in large changes in percent. When a percentage, or prevalence, is available in this table, the percent change will be calculated from those values				

Lab reports: During the Week 17, reporting Summit County facilities ordered 557 influenza tests, of which none had a positive result. 2,344 COVID-19 tests were completed by reporting partners, with a positivity rate of 8.0% in Week 17 (a 24.2% decrease from Week 16) (**Fig. 4**)
Note: Influenza and COVID-19 testing data are collected from selected reporting partners and do not represent positivity rates for the entire county.

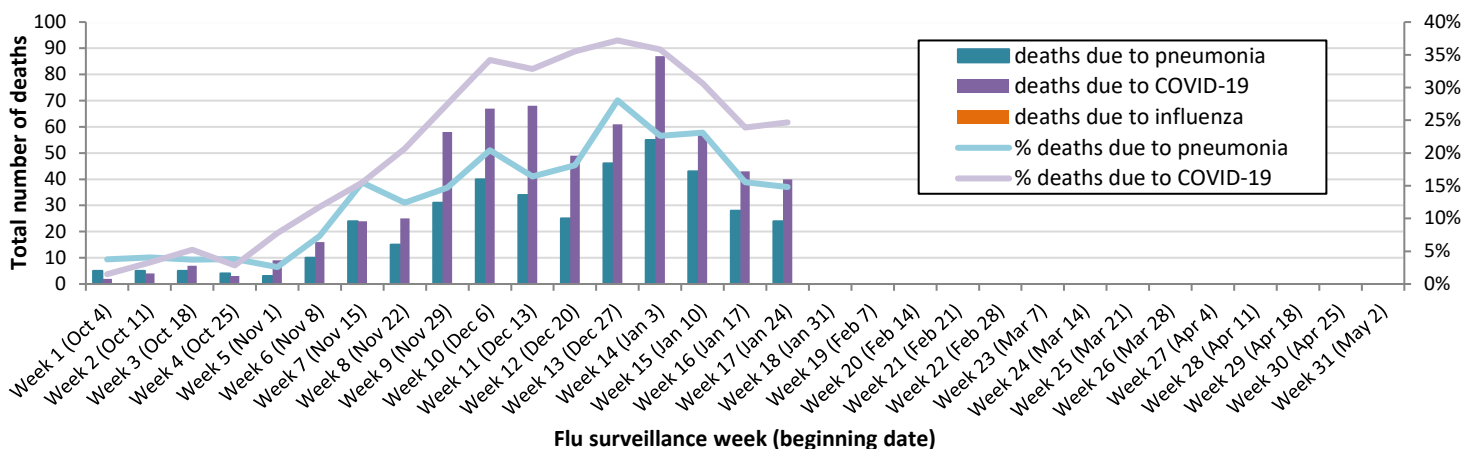
Acute Care Hospitalizations: There was zero reported influenza and 149 COVID-19 admissions during Week 17. **Figure 2** displays hospitalizations in Summit County.

Pharmacies: Zero prescriptions for CDC- approved influenza antiviral medications were reported during Week 17.

School absenteeism includes absences regardless of reason. In Week 17, the absence rate was 5.9%. This was 24% higher than the rate reported in Week 16.

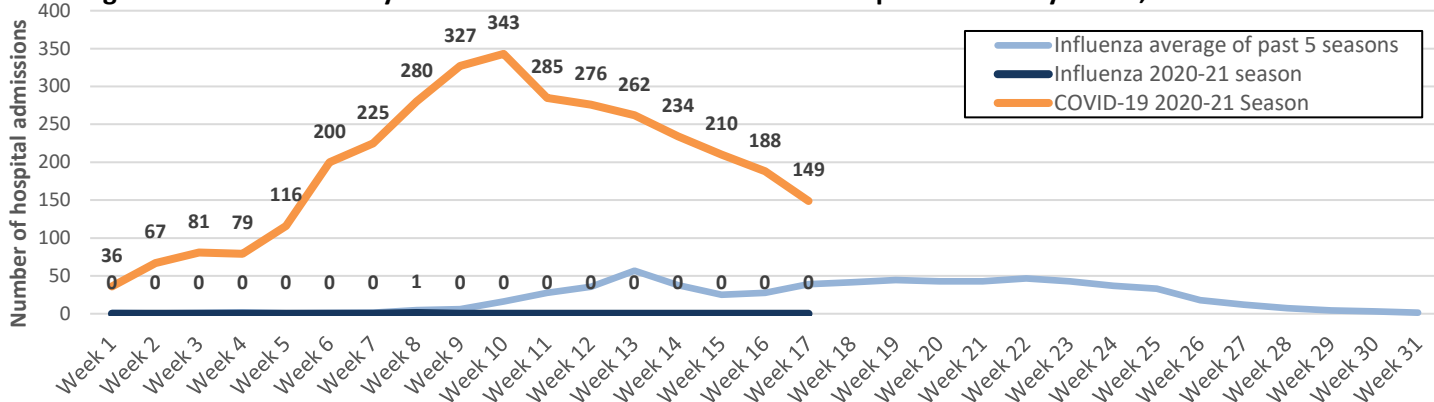
Zero deaths related to influenza, 40 COVID-19 deaths and 24 pneumonia related deaths were reported during Wk 17. The rates of pneumonia deaths decreased by 5% and the COVID-19 associated death rate increased by 3%. **Figure 1** displays weekly counts of deaths occurring in Summit County associated with pneumonia, COVID-19 and influenza.

Figure 1. Weekly Summit County death counts associated with pneumonia and influenza during 2020-2021 season



Hospitalizations: Summit County hospitals reported no influenza-associated hospitalizations, and 149 COVID-19 admissions in Week 17. **Figure 2** displays weekly confirmed hospitalization counts for Summit County (**influenza total count to date = 1**).

Figure 2. Summit County influenza and COVID-19 associated hospitalizations by week, 2020-2021 season



ESSENCE stands for the Electronic Surveillance System for the Early Notification of Community-based Epidemics. ESSENCE is a web-based disease surveillance information system that lets agencies analyze events of public health interest, monitor healthcare data for events that could affect public health. For this report, ED visits related to respiratory complaints and fever / ILI. **Figure 3** displays the weekly number of ER visits related to ILI and flu symptoms in Summit County. There were 91 ILI-related visits reported during Week 17, which was 1.8% of total ED visits (n = 5026). This rate was 13% lower than the ILI rate during Week 16.

Figure 3. Weekly ED visits in Summit County related to Fever + ILI stratified by age groups, 2020 to 2021 season

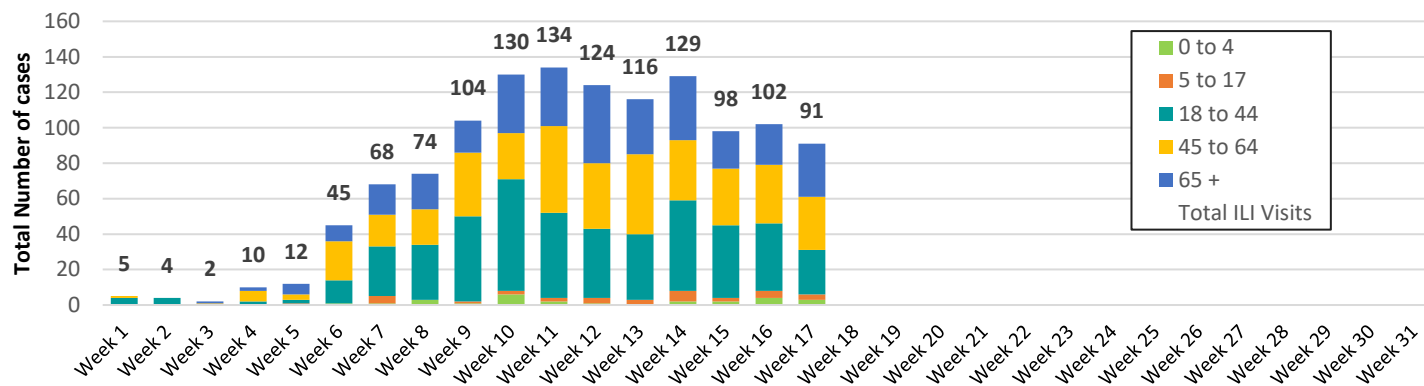
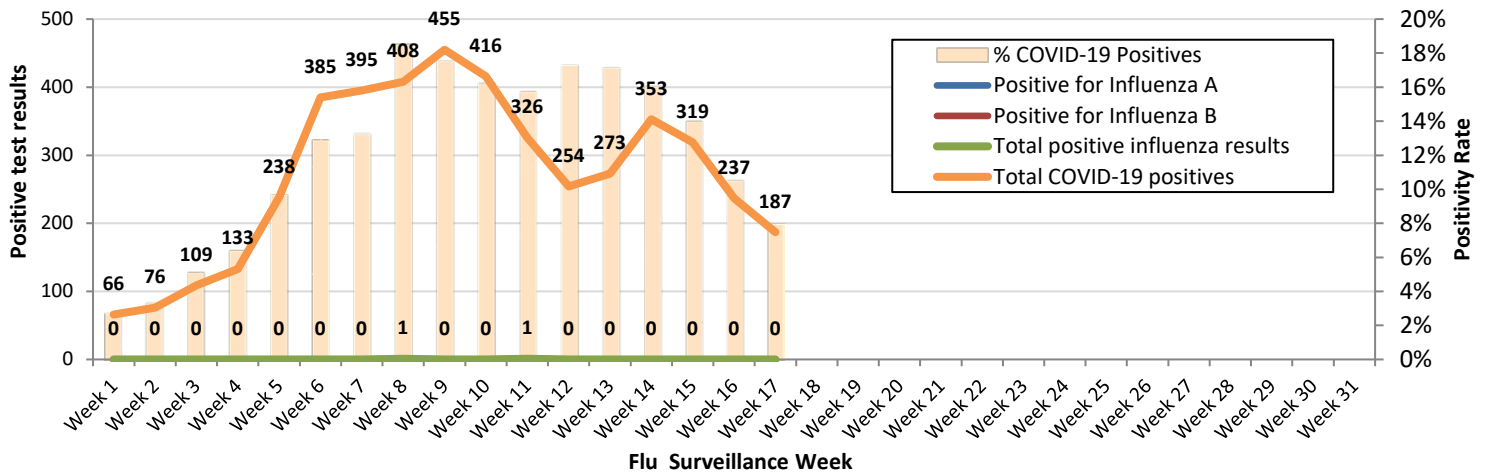


Figure 4. Influenza diagnostic tests with positive results completed by Summit County health facilities, 2020 - 2021 season



Ohio Influenza Activity: from the Ohio Department of Health:

Current Ohio Activity Level (Geographic Spread) – Minimal

During MMWR Week 4, public health surveillance data sources indicate minimal intensity for influenza-like illness (ILI) in outpatient settings reported by Ohio’s sentinel providers. Data from public health and clinical laboratories show very low levels of influenza virus circulation. Week 4 syndromic emergency department data is delayed as Ohio finalizes the transition between syndromic surveillance data vendors. Reported cases of influenza-associated hospitalizations are below the seasonal threshold*. There were 3 influenza-associated hospitalizations reported during MMWR Week 4.

Ohio Influenza Activity Summary Dashboard (January 24 to 30, 2021):

Data Source	Current week value	Percent Change from last week ¹	# of weeks ²	Trend Chart ³
Influenza-like Illness (ILI) Outpatient Data (ILINet Sentinel Provider Visits)	0.87%	-14.71%	↓ 3	
Fever and ILI Specified ED Visits (EpiCenter) ⁴	1.73%	-14.78%	↓ 4	
Constitutional ED Visits (EpiCenter) ⁴	9.82%	-5.12%	↓ 2	
Confirmed Influenza-associated Hospitalizations (Ohio Disease Reporting System)	3	-50.00%	↓ 1	

¹Interpret percent changes with caution. Large variability may be exhibited in data sources with low weekly values.

²Number of weeks that the % change is increasing or decreasing.

³Black lines represent current week’s data; red lines represent baseline averages

⁴Week 4 syndromic emergency department data is delayed as Ohio finalizes the transition between syndromic surveillance data vendors; Data through week 52 is shown.

Source: <https://www.odh.ohio.gov/seasflu/Ohio%20Flu%20Activity.aspx>

Ohio Surveillance Data:

- The Ohio Department of Health Laboratory has tested 8 specimens for influenza during the 2020-2021 influenza season; of these, **0 tested positive for influenza A(H1N1pdm09), 0 for influenza A(H3N2), 1 for influenza A (not subtyped), 1 for influenza B, and 6 were negative** (through 1/30/2021).
- The National Respiratory and Enteric Virus Surveillance System (NREVSS) and U.S. World Health Organization (WHO) Collaborating Laboratories reported **20,489** tests for influenza performed at participating facilities; of these, **0 tested positive for influenza A(H1N1pdm09), 2 for influenza A(H3N2), 33 for influenza A (subtyping not performed), and 18 for influenza B** (through 01/23/2021; 2020-2021 season positive influenza testing data reflects a two-week lag to ensure data completeness).
- No **pediatric influenza-associated mortalities** have been reported so far during the 2020-2021 influenza season (through 1/30/2021).
- No **novel influenza A virus infections** have been reported so far during the 2020-2021 influenza season (through 1/30/2021).
- Incidence of confirmed **influenza-associated hospitalizations** in 2020-2021 season = **71** (through 1/30/2021).

National Surveillance: from Centers for Disease Control and Prevention (CDC):

Seasonal influenza activity in the United States remains lower than usual for this time of year.

National Outpatient Illness Surveillance:

During week 4, the percentage of outpatient visits for ILI decreased to 1.1% (**Figure 5**), which is below the national baseline of 2.6%. During week 4, compared with week 3, the percentage of visits for ILI decreased for two regions (Regions 2 and 6) and remained stable (change of $\leq 0.1\%$) in the remaining eight regions. All regions reported percentages of outpatient visits for ILI below their region-specific baselines. In Week 4, all reporting states & territories experienced minimal activity as reported by sentinel ILINet providers (**Fig. 6**).

Figure 5. Percentage of visits for influenza-like illness (ILI) reported by the U.S. Outpatient Influenza-like Surveillance Network (ILINet), weekly national summary, 2020-2021 and selected previous seasons

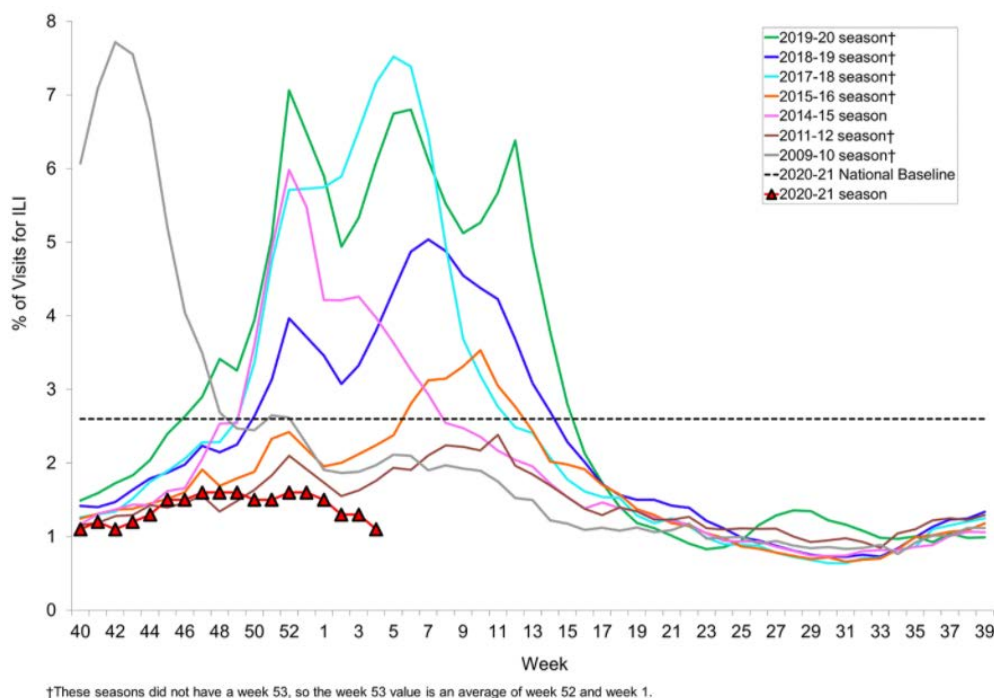
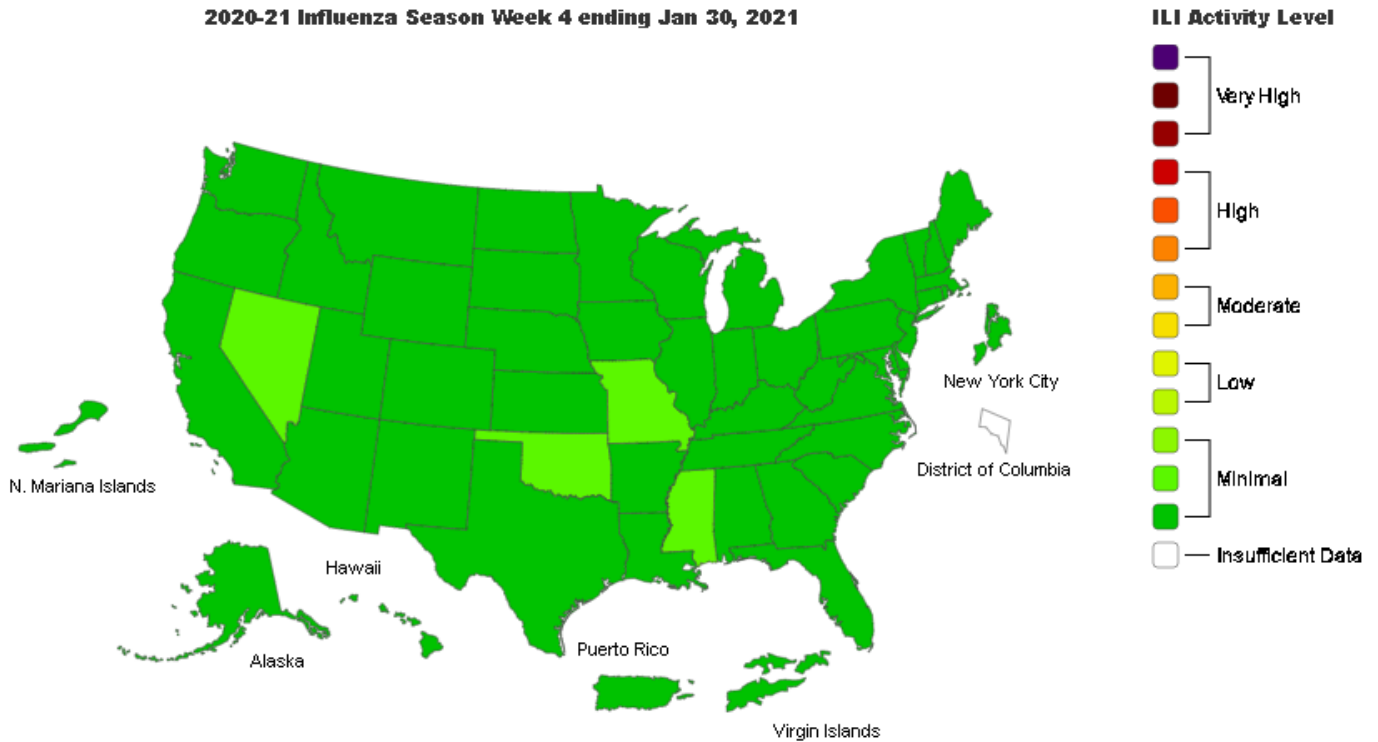


Figure 6. Influenza-like illness (ILI) activity level indicator determined by data reported to ILINet



Source: <https://www.cdc.gov/flu/weekly/>

Global Surveillance:

Influenza Update N° 386, World Health Organization (WHO), published 1 February 2021, based on data up to 17 January 2021. The Update is published every two weeks.

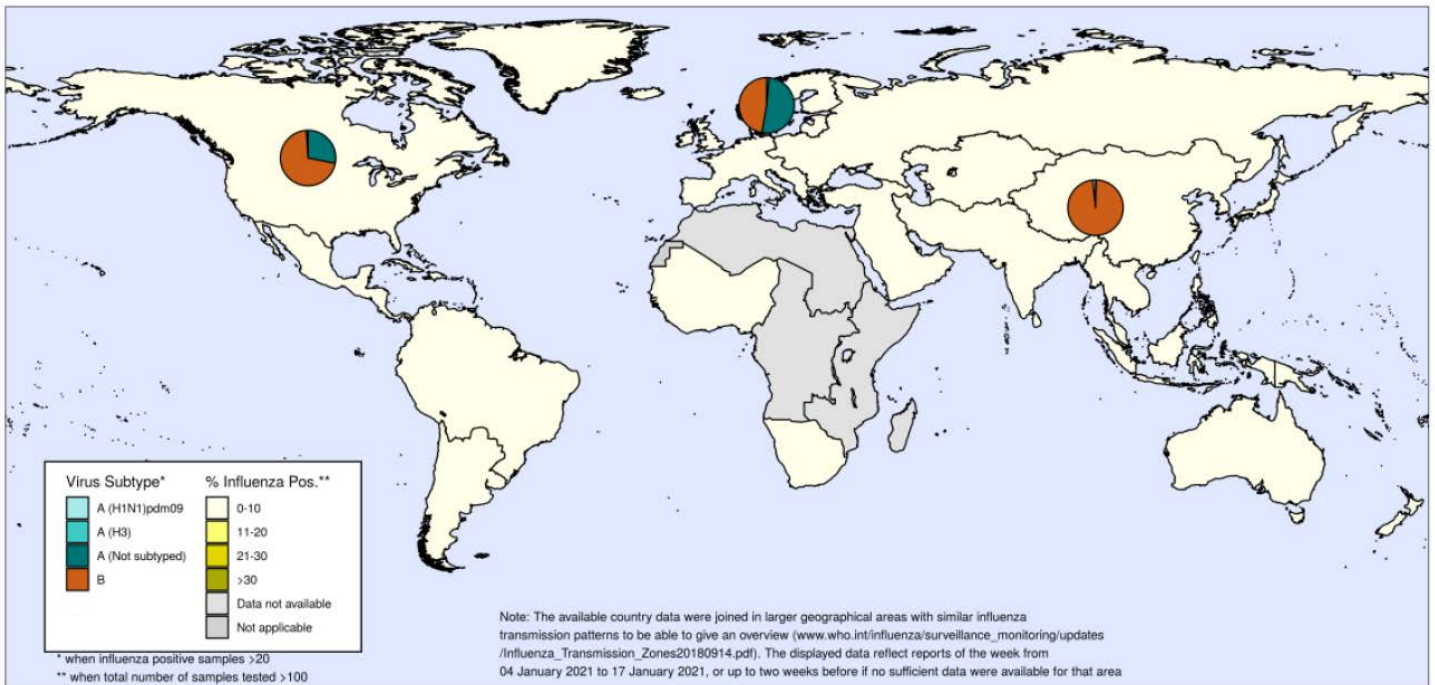
Summary

The current influenza surveillance data should be interpreted with caution as the ongoing COVID-19 pandemic has influenced to varying extents health seeking behaviours, staffing/routines in sentinel sites, as well as testing priorities and capacities in Member States. The various hygiene and physical distancing measures implemented by Member States to reduce SARS-CoV-2 virus transmission have likely played a role in reducing influenza virus transmission.

- **Globally**, despite continued or even increased testing for influenza in some countries, influenza activity remained at lower levels than expected for this time of the year.
- In the **temperate zone of the northern hemisphere**, influenza activity remained below baseline, though sporadic detections of influenza A and B viruses were reported in some countries.
- In the **temperate zone of the southern hemisphere**, influenza activity was reported at inter-seasonal level.
- In the **Caribbean and Central American countries**, low influenza detections were reported in Haiti. Severe acute respiratory infection (SARI) activity increased in Costa Rica.
- In **tropical South America**, there were no influenza detections reported in this period.
- In **tropical Africa**, influenza activity continued to be reported in Western Africa.
- In **Southern Asia**, sporadic influenza detections were reported across reporting countries.
- In **South East Asia**, influenza detections were reported in some countries in this reporting period.
- **Worldwide**, influenza B detections accounted for the majority of the very low numbers of detections reported.

- National Influenza Centres (NICs) and other national influenza laboratories from 82 countries, areas or territories reported data to FluNet for the time period from 04 January 2021 to 17 January 2021 (data as of 2021-01-29 04:07:09 UTC). The WHO GISRS laboratories tested more than 233931 specimens during that time period. A total of 566 specimens were positive for influenza viruses, of which 117 (20.7%) were typed as influenza A and 449 (79.3%) as influenza B. Of the sub-typed influenza A viruses, 6 (18.8%) were influenza A(H1N1)pdm09 and 26 (81.3%) were influenza A(H3N2). Of the characterized B viruses, 1 (0.4%) belonged to the B-Yamagata lineage and 253 (99.6%) to the B-Victoria lineage.

Figure 7. Percentage of respiratory specimens that tested positive for influenza, by influenza transmission zone (based on data up to 17 January, 2021)



The boundaries and names shown and the designations used on this map do not imply the expression of any opinion whatsoever on the part of the World Health Organization concerning the legal status of any country, territory, city or area or of its authorities, or concerning the delimitation of its frontiers or boundaries. Dotted and dashed lines on maps represent approximate border lines for which there may not yet be full agreement.



Data source: Global Influenza Surveillance and Response System (GISRS), FluNet (www.who.int/flu-net)
 Copyright WHO 2021. All rights reserved.

Source: https://www.who.int/influenza/surveillance_monitoring/updates/latest_update_GIP_surveillance/en/

About this report: Reporting agencies include labs, hospitals, long-term care and community-based care providers, physician offices, university clinic, pharmacies, and schools. Agencies are distributed throughout Summit County and report different indicators of flu activity including total lab tests, numbers of positive tests and type, antiviral prescriptions filled, school absences, and influenza like illness (ILI). Hospitalizations are lab confirmed for influenza and are obtained from the Ohio Disease Reporting System. Number of deaths associated with influenza and pneumonia are gathered from the Summit County Office of Vital Records death listings. Emergency room visits for complaints related to influenza are obtained by syndromic surveillance system (Epicenter).

Special thanks to all agencies who report Influenza related data weekly.

Reporting from participants may not be complete each week. Numbers may change as updated reports are received. For questions, please contact Joan Hall at the Summit County Public Health Communicable Disease Unit (330-375-2662 or cdu@schd.org). This report was issued on February 5, 2021.