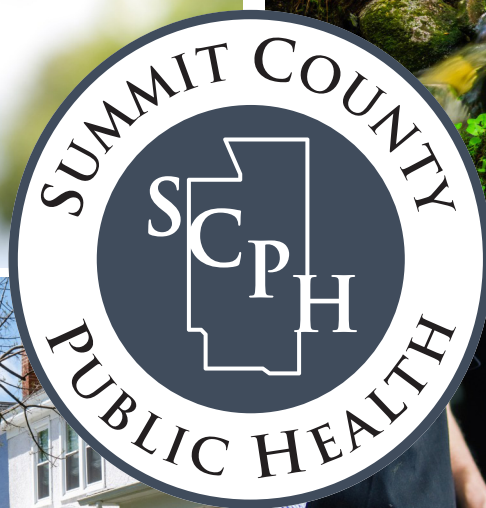


Summit County Public Health

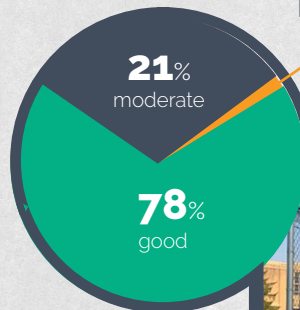


ENVIRONMENTAL HEALTH 2022 ANNUAL REPORT



AIR QUALITY

The Akron Regional Air Quality Management District (ARAQMD), a service of Summit County Public Health, works in coordination with Ohio EPA toward the goal of clean air in Medina, Summit and Portage counties. ARAQMD inspects companies and reviews permits for air pollution sources in all three counties. Outdoor air quality complaints are also investigated. The air program also covers large scale asbestos removal projects, open burning concerns, and air monitoring for all three counties. With a staff of 14, ARAQMD works to help our region continue to see air quality improvements! Learn more at: www.araqmd.org.



How was our air in 2022?

1% unhealthy for sensitive groups

Air monitoring site in North Akron



OPEN BURNING & FUGITIVE DUST FOLLOW-UPS

79

To help reduce regional particulate air pollution, Ohio law places limits on open burning and fugitive dust. In 2022 we performed a combined 95 inspections related to either open burning or fugitive dust.



AIR QUALITY INSPECTIONS

233

We have over 1,300 facilities with air permits. Our staff perform routine required inspections as well as complaint investigations at permitted facilities. Additionally, we have staff that inspect demolition and renovation projects for asbestos as required by Ohio law.



UNHEALTHY AIR DAYS

4

The Air Quality Index (AQI) is a tool used to help communicate current and forecasted air quality conditions. Both "moderate" and "good" AQI readings indicate that the air meets federal standards for quality. AQI readings in the "unhealthy for sensitive groups" and worse levels indicate that the air quality does not meet federal standards and is considered "poor". In 2022, there were four days with air considered "unhealthy for sensitive groups" according to federal standards.



FOOD SAFETY

The food safety program works to protect the public by making sure all places selling food are using the best food handling practices to provide food that is safe for people to eat. Places selling food are inspected to make sure that all staff are handling the food in ways that keep it safe to eat. These places include, restaurants, grocery stores, mobiles (like food trucks), temporary operations (like fair-food sellers at events), and even vending machines.



	LICENSED FOOD FACILITIES	2,951
	FOOD FACILITY INSPECTIONS	8,378
	TEMPORARY LICENSES ISSUED	128
	MOBILE LICENSES ISSUED	166
	VENDING MACHINE LICENSES ISSUED	198

Inspections are completed 1-2 times per year depending on the risk level and/or when complaints are received or enforcement action such as follow-up inspections are required. Summit County licenses and inspects approximately 3,500 food facilities each year.





NEIGHBORHOOD HEALTH

Where you live may be a major determinant of health. The city, neighborhood and even your residence impact your health. The SCPH Neighborhood Health program helps residents solve housing and neighborhood issues that create barriers to healthy living.

MOSQUITO CONTROL PROGRAM

The goal of Summit County Public Health's Mosquito Control Program is to reduce the number of disease carrying mosquitoes in an environmentally responsible manner. This agency provides mosquito surveillance services to our community partners and when we detect disease-carrying mosquitoes, we provide a response using integrated pest management. We also strive to educate our community partners and the public on best practices that have been proven effective in reducing the number of mosquito breeding sites.

- **568** mosquito traps set at **181** surveillance locations
- **10** testing pools were positive for West Nile virus
- Reduced mosquito breeding grounds by collecting and disposing of **1092** scrap tires
- Evaluated and treated, if necessary, **4712** known mosquito breeding sites
- Conducted **51** ULV (Ultra Low Volume) night spray applications covering **26,345** acres

LEAD POISONING PREVENTION PROGRAM

Acting as a delegated authority for the Ohio Department of Health (ODH), SCPH conducted **99** elevated blood lead level (EBL) investigations for children under the age of six. SCPH, in conjunction with the United States Department of Housing and Urban Development (HUD) and Summit County Department of Development (SCDOD), remediated lead paint hazards in **20** homes and conducted lead risk assessments for **34** homes despite supply line delays and a statewide contractor shortage.



HOUSING INVESTIGATIONS & INSPECTIONS

Complaint Type	#
Indoor Air / Mold Inquiries	80
Landlord / Tenant Disputes	86
Trash / Hoarding / Unsanitary Conditions	138
Mosquito Complaints	28
Pest / Vermin Complaints	72
Animal Bite Exposure Investigations	963
Lead Investigations	99
Hotel Complaint Inspections	42
Jail Inspections	31



WATER QUALITY

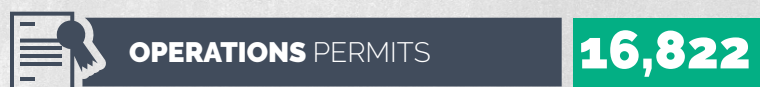
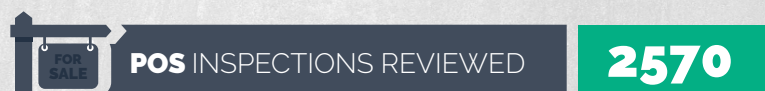
The Water Quality program works to ensure that ground and surface water are safe from potential sources of contamination by enforcing the state of Ohio Sewage Treatment System (STS) and Private Water System (PWS) rules. Program staff are responsible for permitting and inspecting STS systems for residential homes, certain smaller commercial properties, and PWS sources such as water wells and cisterns.



OTHER PROGRAMS

To complement the state rules and reduce the contamination to waters of the state, SCPH has also developed additional programs and services. Other SCPH programs include:

- A point-of-sale (POS) program for the inspection of STS & PWS for residential homes prior to transfer of ownership.
- A program that provides for the consultation and approval of staff prior to the issuance of building and zoning permits for projects that have the potential to affect the STS and/or PWS on-site.



- An operation permit program that tracks the operation of STS to reduce the risk of premature failure of the system due to a lack of maintenance.
- Compliance inspections for commercial septic systems (also known as "semipublic systems").



RECREATION PROGRAM



POOLS, SPAS & SPECIAL-USE POOL PERMITS

256

Part of what makes living in Summit County so great is the abundance of recreation opportunities throughout the county. Beaches, swimming pools, spas,

RV parks and residential camps all fall under the Environmental Health Division's responsibility. Ensuring adequate equipment, maintenance, and general health and safety standards are being met are the top priority of this program. Additionally, should any complaints about a facility come in, our staff will investigate and initiate corrective actions if required. In 2019, SCPH started using NOAA satellite images shared by the Ohio Department of Health for harmful algal bloom (HAB) monitoring that can detect cyanotoxins or cyanotoxin-producing genes in water. This information, along with on-site visual inspection results are shared with the owner/operator.

Pool inspections	823
Pool equipment inspections	269

POOL SAFETY CONSULTATIONS

12



PUBLIC BATHING BEACH INSPECTIONS

20

WATER QUALITY SAMPLES COLLECTED

50

Summit County Public Health issued 11 permits to public bathing beaches in Summit County in 2022. Inspections are generally completed at each permitted bathing beach two times per season. They are generally unannounced .

Campgrounds are generally seasonal & offer opportunities for campers to enjoy a variety of activities with overnight lodging. The Ohio Administrative Code requires these facilities to be inspected annually.



CAMPS

Licensed camps	11
Inspections	28

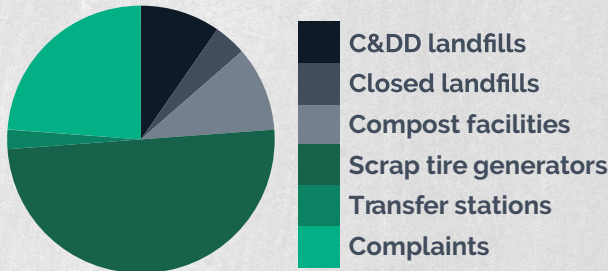


SOLID WASTE

The Solid and Infectious Waste program at Summit County Public Health works to protect human health and the environment by inspecting all licensed, permitted and registered solid waste facilities, and by responding to complaints about possible illegal solid waste activities throughout the county. SCPH inspects different types of solid waste facilities including:

- Construction & Demolition Debris (C&DD) Landfills and Processing Facilities:** Three landfills in the county accept only construction and/or demolition debris (no garbage or hazardous waste) and four facilities process, transfer or recycle C&DD.
- Solid Waste Transfer Stations:** Three facilities accept solid waste from surrounding communities and then transfer it to active solid waste landfills. These are inspected at least quarterly.
- Closed Landfills:** Closed landfills have a 30 year "post closure care" period where they are routinely inspected. Four closed landfills exist within the county and are inspected to assure compliance with several environmental conditions.
- Other Inspections:** Other entities inspected by the program include: one infectious waste treatment site, scrap tire generators, compost facilities, and any location where we receive complaints regarding potential illegal dumping activities.

2022 INSPECTIONS



SOLID WASTE FACILITY INSPECTIONS

C&DD Landfill& Processing Facility Inspections	60
Closed Landfill Inspections	13
Compost Facility Inspections	27
Scrap Tire Inspections	237
Transfer Stations	13
Complaint Inspections	107
Infectious Waste Treatment Facility Inspections	4



MORE PROGRAMS



MATH MANAGING ASTHMA TRIGGERS @ HOME

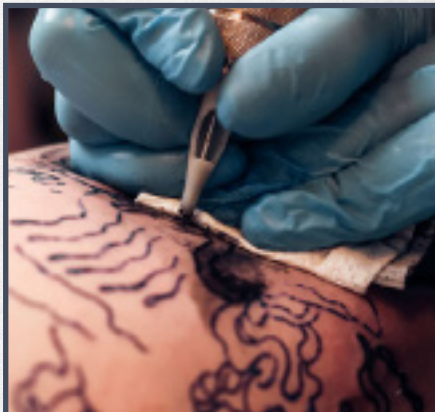
The Managing Asthma Triggers @ Home (MATH) program provides a suite of evidence-based products and services, as well as home visits designed to help families reduce at-home asthma triggers. The research part of the program ended in 2021 and it is now a collaborative service provided by SCPH in partnership with Akron Children's Hospital.

Some of the 2022 highlights include:

Families enrolled	22
Families completing project	5
Average improvement in asthma test scores	+5.3

D.U.M.P. PROGRAM

What do you do when you or a loved one has medicine that is no longer needed? **Dispose of Unused Medications Properly (D.U.M.P.)**. Prescription drug abuse and concerns for the environment led to the creation of this program. SCPH, local police departments and the Summit County Sheriff's office have partnered to provide a safe, environmentally responsible disposal option. The Sheriff's office provides secure transportation of all disposed medicines. In 2022, SCPH collected **6,496** pounds of unused medicines.



BODY ART INSPECTIONS

When you decide to pursue body art or piercings, you want peace of mind knowing the facility employs proper disease control practices. SCPH inspects facilities to ensure the owners follow safe work practices.

Facilities	76
Inspections	151
Complaints	9



MORE PROGRAMS



SCHOOL INSPECTIONS

Local health districts are mandated in the Ohio Revised Code to inspect all school buildings twice per year to assess the general condition and sanitation of the building.

Total Number of Facilities in SCPH Jurisdiction	191
Public Facilities	141
Non- Public Facilities (Including Charter Schools)	50
Total Number of Complaints Received	3
Total Inspections Completed	387
Standard	387
Consultations	4

RIGHT TO KNOW

SCPH manages the City of Akron's Community Right to Know program. This program tracks businesses who use, manufacture or store between 500-10,000 pounds of hazardous chemicals onsite. Inspectors visit each facility annually and track and log a chemical inventory list. This chemical inventory is shared with the Akron Fire Department. In 2022, 227 facility inspections were completed by SCPH.

